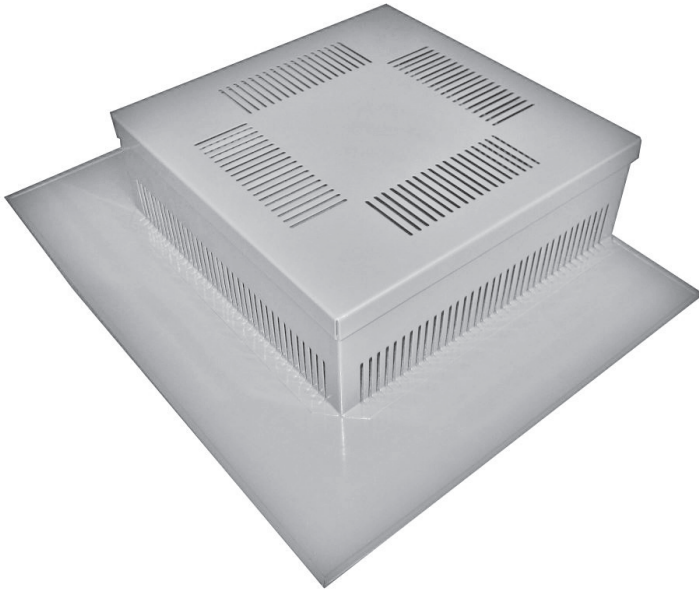


Inspection Chamber Basic - Metal

FEATURES

- Drains can be controlled and cleaned without bigger effort anytime. For safe and steady drainage of green roofs
- Can be positioned on the surface of the roof or next to a parapet of a membrane roof
- Body and top cover made of galvanised steel with triple paint coating (RAL 9007)
- With pressure distributing support-flange

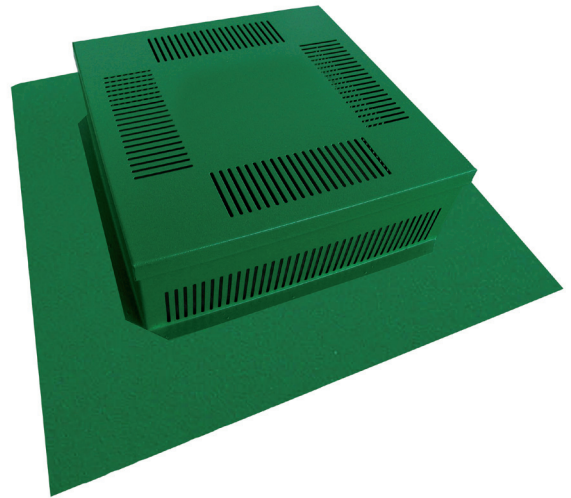


ACCESSORIES

- Extension panel 125 mm high

DATA

Height:	100 mm
Dimension:	300 mm x 300 mm
Raw material body:	galvanised steel
Raw material top cover:	galvanised steel
Paint coating:	three times RAL 9007



SUGGESTION FOR A TENDER

pcs Inspection chamber with body and top cover made of galvanised steel with triple paint coating (RAL 9007) with pressure distributing support-flange suitable positioning on the surface of the roof or next to a parapet of a membrane roof

Dimension:	<input type="checkbox"/> 300 mm x 300 mm
Height:	<input type="checkbox"/> 100 mm
Raw material:	<input type="checkbox"/> Body and top cover made of galvanised steel with triple paint coating
Colour:	<input type="checkbox"/> RAL 9007
Proof of delivery:	6 fuers Gruen GmbH - Kanalstrasse 2 - D-66130 Saarbruecken Phone (+49) 06 81 / 9 60 21 46 - 0 - Fax (+49) 06 81 / 9 60 21 46 - 26 E-Mail info@6-f-g.de - www.6-f-g.de