

Branch Drain Pro



FEATURES

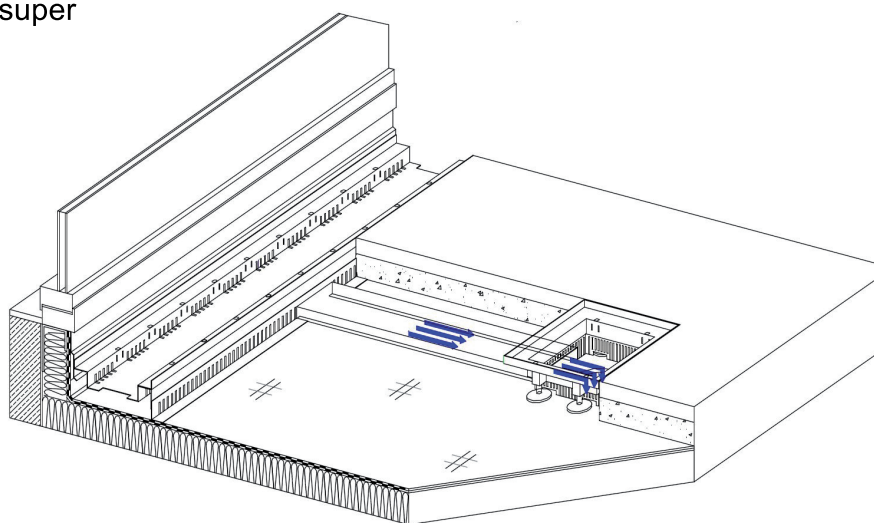
- Linear evacuation of water directly to the drains
- System components allow for an easy inspection and cleaning of the drainage elements
- Change of direction of the branch drains by infinitely adjustable corner connectors
- Ports for connection with drainage channel and gully top frame can be broken out easily

DATA

- Body: Galvanised steel with super corrosion protector or stainless steel
- Dimension: 100 x 30 mm
- Length: 1000 mm
2000 mm

ACCESSORIES

- Assembling retainer for drainage channel with integrated water strainer
- Infinitely adjustable corner connector
- Boundary profile



SUGGESTION FOR A TENDER

__m branch drains pro

- Dimension: 100 x 30 mm
- Length: 1000 mm 2000 mm
- Raw material: galvanised steel with super-corrosion protector stainless steel
- Type: closed slotted

Connection to drainage channel and gully top frame by ports which can be broken out easily, to deliver and to install professionally

Proof of delivery: 6 fuers Gruen GmbH - Kanalstrasse 2 - D-66130 Saarbruecken
Phone (+49) 06 81 / 9 60 21 46 - 0 - Fax (+49) 06 81 / 9 60 21 46 - 26
E-Mail info@6-f-g.de - www.6-f-g.de

*06/2018