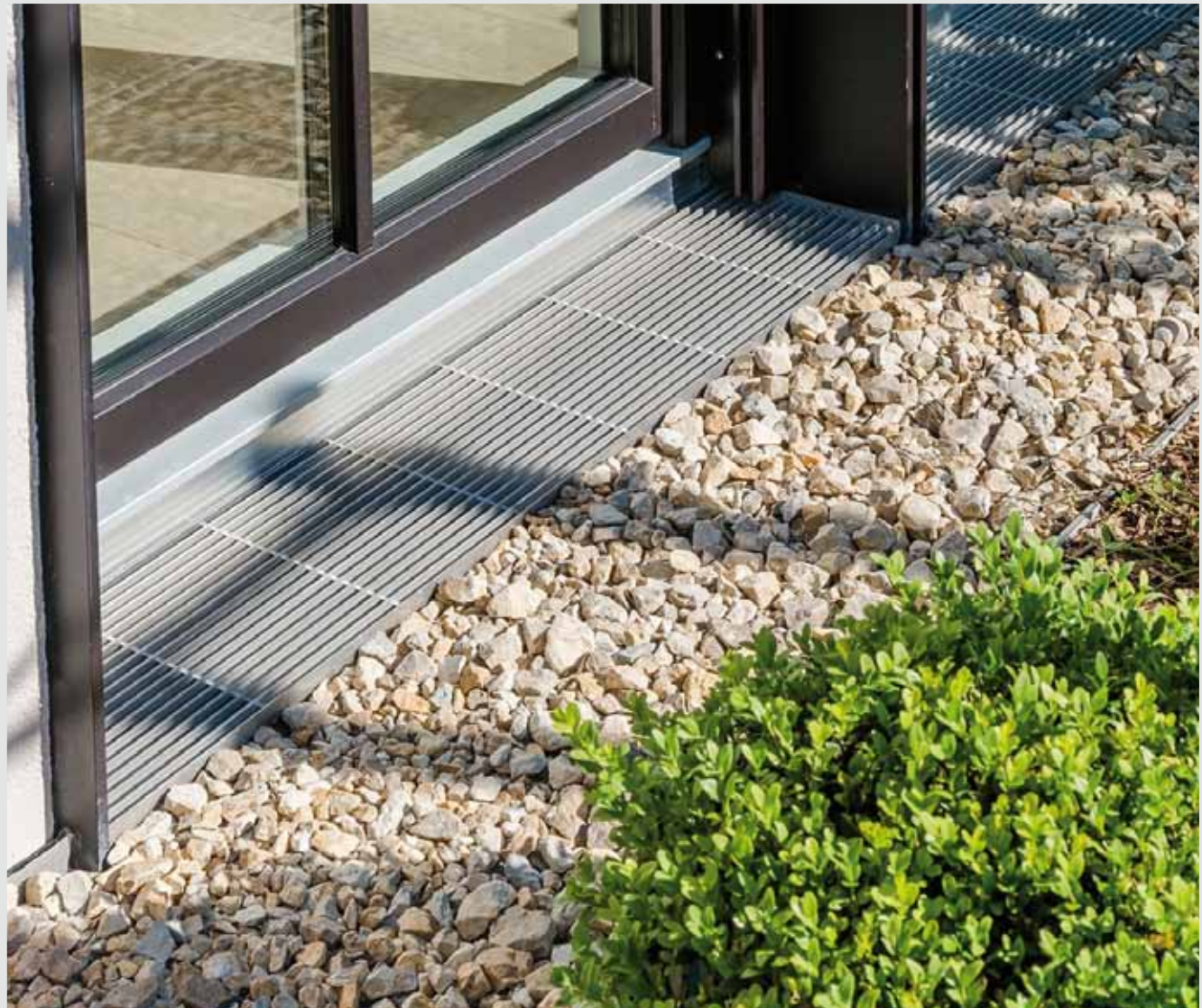


6 fürs GRÜN

- Green Roofs
- Artificial Turf
- Natural Ponds
- Garden Lighting
- Flat Roofing
- Road Construction

Since more than 30 years
successful in green roofs

Dewatering

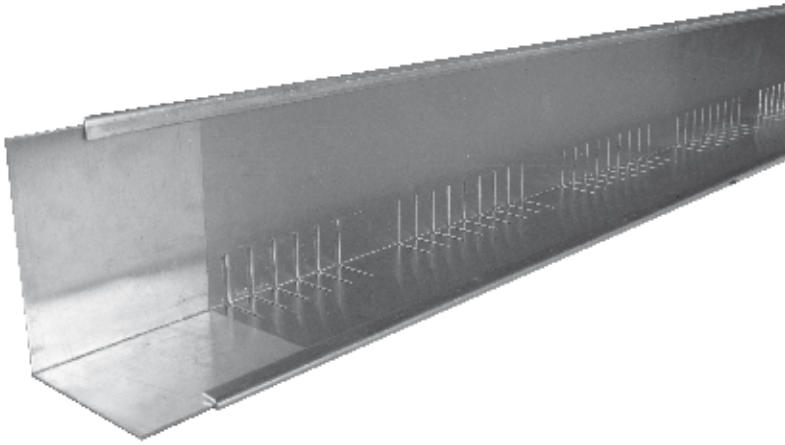


- Green Roofs
- Artificial Turf
- Natural Ponds
- Garden Lighting
- Flat Roofing
- Road Construction

Content

Gravel Stop Basic	page 2
Gravel Stop Profi	page 3
Gravel Stop telescopic	page 4
Branch Drain Pro	page 5
Drainage Channel Basic	page 6
Drainage Channel Pro	page 7
Gully Top Pro	page 8
Inspection Chamber / Gully Top Vario	page 9
Inspection Chamber Pro – foldable	page 10
Inspection Chamber Basic – Metal	page 11
Inspection Chamber Basic – Polypropylene	page 12

Gravel Stop Basic



FEATURES

- Gravel stops for clear boundaries of green roofs
- The different heights of the journals allow to use the gravel stop on different heights of construction
- Quick and aligned laying due to joint connectors
- The gravel stops get fixed by the load of the green roof

DATA

Raw Material:	Aluminium
Height of journals:	Height A / Height B 80 mm / 100 mm 120 mm / 150 mm
Length:	2000 mm
Thickness:	1.2 mm
Folding:	Three times



Installation height A



Installation height B

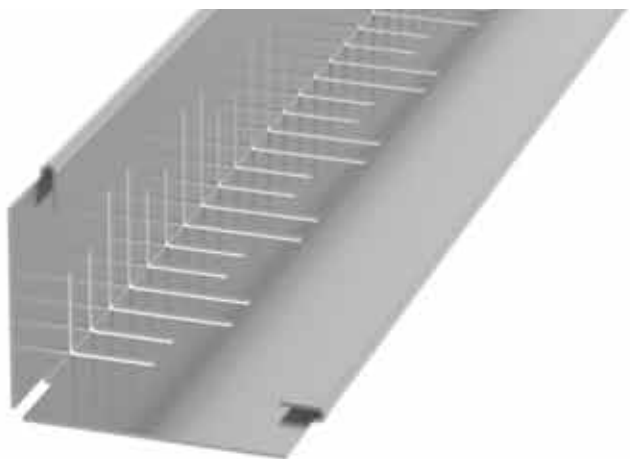
SUGGESTION FOR A TENDER

___rm gravel stop Basic

Raw material:	<input type="checkbox"/> aluminium
Height of journals:	<input type="checkbox"/> by default for two construction heights <input type="checkbox"/> 80 / 100 mm <input type="checkbox"/> 120 / 150 mm
Length:	<input type="checkbox"/> 2000 mm
Drainage capacity:	<input type="checkbox"/> about 81 cm ² /rm
to deliver and to install professionally.	

Proof of delivery: 6 fuers Gruen GmbH - Kanalstrasse 2 - D-66130 Saarbruecken
Phone (+49) 06 81 / 9 60 21 46 – 0 – Fax (+49) 06 81 / 9 60 21 46 – 26
E-Mail info@6-f-g.de - www.6-f-g.de

Gravel Stop Profi



DATA

- Gravel stop: Aluminium or stainless steel
- Height of journals: Height A / Height B
 - 60 mm / 80 mm
 - 80 mm / 100 mm
 - 100 mm / 120 mm
 - 120 mm / 150 mm
- Length: 2500 mm
- Thickness: 1.0 mm on 60 / 80 mm + 80 / 100 mm
1.2 mm on 100 / 120 mm + 120 / 150 mm
- Folding: Outer edges folded

MOULDINGS AND ACCESSORIES

- Assembling retainers
- Corner connectors
- Arch connectors

SUGGESTION FOR A TENDER

lfm 6-f-gravel stop Profi

- Raw material: ☐ aluminium ☐ stainless steel
- height of journals: ☐ by default for two construction heights
☐ 60 / 80 mm ☐ 80 / 100 mm ☐ 100 / 120 mm ☐ 120 / 150 mm
- Length: ☐ 2500 mm
- to deliver and to install professionally.

Proof of delivery: 6 fürs Grün GmbH – Kanalstraße 2 – D-66130 Saarbrücken
Phone (+49) 06 81 / 9 60 21 46 - 0 – Telefax (+49) 06 81 / 9 60 21 46 - 26
E-Mail info@6-f-g.de - www.6-f-g.de

FEATURES

- Gravel stop for clear boundaries of green roofs
- The different heights of the journals allow to use the gravel stop on different heights of construction
- Quick and aligned laying due to integral joint connectors
- The fixation of the gravel stop can be carried out with an assembling retainer which will be bonded with the sealing or by the load of the green roof
- Corner moulds 90°, special connectors on demand



Installation height A



Installation height B

DIMENSIONS ON REQUEST

- Special length
- Special height
- Special thickness

Gravel Stop – telescopic

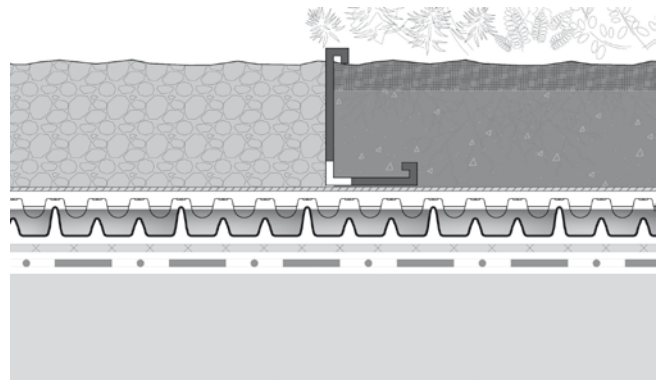


FEATURES

- Gravel stop for clear boundaries of green roofs.
- Telescopic extension from 2.00 m until about 3.80 m possible
- Easy fixation of the length by 2 clips. The clips are included in the delivery
- With five folds for protection of the waterproofing of the roof
- The different heights of the journals allow to use the gravel stops on different heights of construction
- Quick and aligned laying by inserting one gravel stop into the other. Connectors not necessary

DATA

- | | |
|-----------------------|-----------------------------|
| - Gravel stop: | Aluminium |
| - Height of journals: | Height A / Height B |
| | 60 mm / 90 mm |
| | 80 mm / 100 mm |
| | 80 mm / 120 mm |
| - Length: | 2000 – 3800 mm |
| - Drainage slots | about 54 cm ² /m |



MOULDINGS AND ACCESSORIES

- Corner connection 88° - 359°

SUGGESTION FOR A TENDER

___m gravel stop telescopic

- | | |
|---|---|
| Raw material: | <input type="checkbox"/> Aluminium |
| Height of journals: | <input type="checkbox"/> by default for two construction heights |
| | <input type="checkbox"/> 60 / 90 mm <input type="checkbox"/> 80 / 100 mm <input type="checkbox"/> 80 / 120 mm |
| Length: | <input type="checkbox"/> 2000 mm extendable till about 3800 mm |
| Drainage slots: | <input type="checkbox"/> about 54 cm ² /lfm |
| to deliver and to install professionally. | |
| Proof of delivery: | 6 fürs Gruen GmbH - Kanalstrasse 2 - D-66130 Saarbruecken |
| | Phone (+49) 06 81 / 9 60 21 46 - 0 - Fax (+49) 06 81 / 9 60 21 46 - 26 |
| | E-Mail info@6-f-g.de - www.6-f-g.de |

Branch Drain Pro



FEATURES

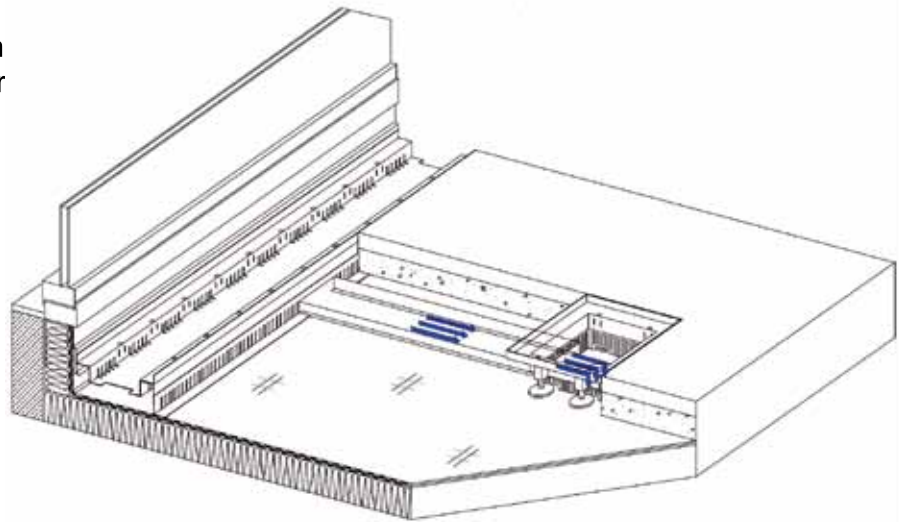
- Linear evacuation of water directly to the drains
- System components allow for an easy inspection and cleaning of the drainage elements
- Change of direction of the branch drains by infinitely adjustable corner connectors
- Ports for connection with drainage channel and gully top frame can be broken out easily

DATA

- Body: Galvanised steel with corrosion protector or stainless steel
- Dimension: 100 x 30 mm
- Length: 1000 mm
2000 mm

ACCESSORIES

- Assembling retainer for drainage channel with integrated water strainer
- Infinitely adjustable corner connector
- Boundary profile



SUGGESTION FOR A TENDER

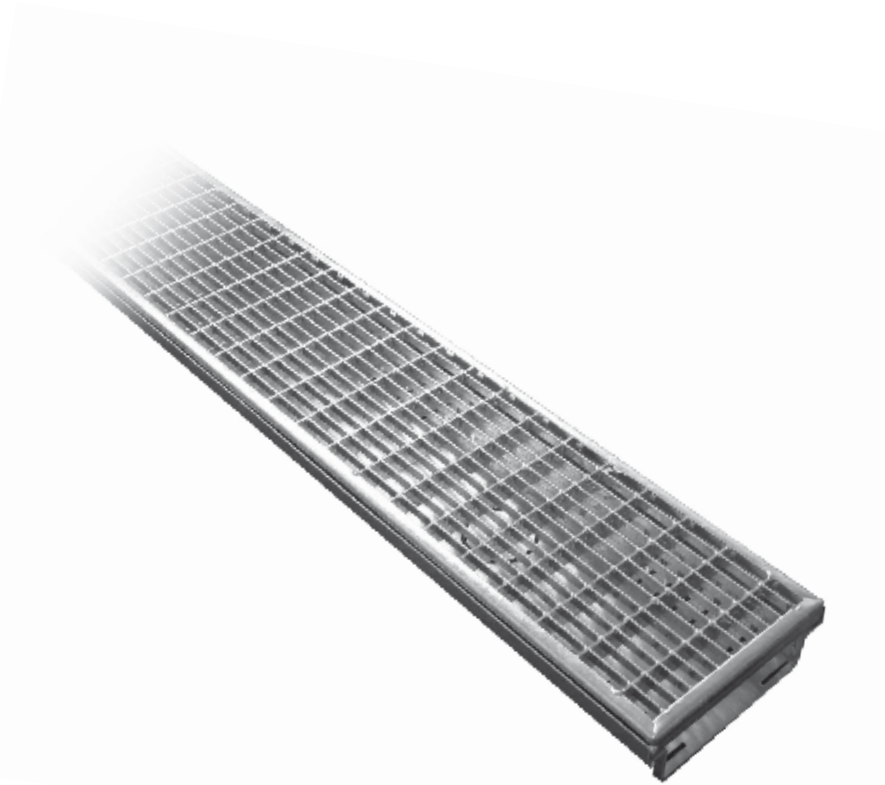
__m branch drains Pro

- Dimension: ☐ 100 x 30 mm
Length: ☐ 1000 mm ☐ 2000 mm
Raw material: ☐ galvanised steel with super-corrosion protector ☐ stainless steel
Type: ☐ closed ☐ slotted

Connection to drainage channel and gully top frame by ports which can be broken out easily, to deliver and to install professionally

Proof of delivery: 6 fuers Gruen GmbH - Kanalstrasse 2 - D-66130 Saarbruecken
Phone (+49) 06 81 / 9 60 21 46 - 0 - Fax (+49) 06 81 / 9 60 21 46 - 26
E-Mail info@6-f-g.de - www.6-f-g.de

Drainage Channel Basic



DATA

Body:	Aluminium
Width:	150 mm
Length:	1000 mm
Height:	42 mm
	50 mm
Grating:	Galvanised steel
Mesh size:	30 x 10 mm

ACCESSORIES

- End caps
- Coupling elements

SUGGESTION FOR A TENDER

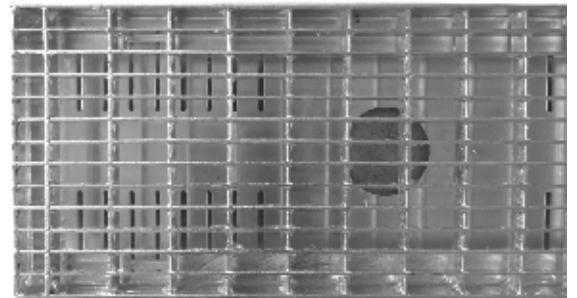
__rm drainage channel Basic

compact body with integrated drainage trims and pre-cut or punched out wholes for direct connection to the drainage layer

Raw Material:	<input type="checkbox"/>	Aluminium
Grating:	<input type="checkbox"/>	Galvanised steel
Width:	<input type="checkbox"/>	150 mm
Length:	<input type="checkbox"/>	1000 mm
Height:	<input type="checkbox"/>	42 mm
	<input type="checkbox"/>	50 mm

FEATURES

- For a safe drainage of flat roofs, green roofs and terraces
- Reduce connection height of 5 cm according to DIN 18195 and the directives for flat roofs, e.g. in the range of doors
- For a quick laying in alignment by coupling elements
- Robust and compact drain body can be cut to length on request
- Body height 50 mm with pre-cut whole Ø 52 mm for direct connection to the drainage layer
- Body height 42 mm with punched out whole Ø 52 mm for direct connection to the drainage layer



Punched out whole for direct connection to the drainage layer

Drainage Channel Pro – Height Adjustable

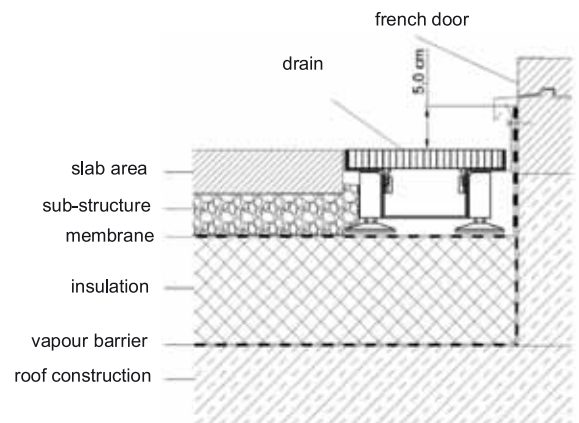


DATA

- Body: Galvanised steel with super corrosion protection or stainless steel 1.4301
 - Width: 100* mm
155 mm
200 mm
250 mm
 - Length: 1000 mm
1500 mm
2000 mm
 - Height adjustment: 63 mm fix
73 - 103 mm
93 - 143 mm
113 - 183 mm
- *on 100 mm width off-size heights

FEATURES

- For a safe drainage of flat roofs, green roofs and terraces
- Reduced connection height of 5 cm according to DIN 18195 and the directives for flat roofs, e.g. in the range of doors
- Easily to adjust with a screwdriver from the topside
- For a quick laying in alignment by coupling elements
- Robust and compact drain body, can be cut to length on request due to displaceable stands
- New width 155 mm according to German flat roof guidelines 12/2016



MOULDINGS AND ACCESSORIES

- Corner moulds
- T-Fittings
- End caps
- Gully tops
- Connection profile
- Grid locking
- Branch canal

DIMENSIONS ON REQUEST

- Length up to 3000 mm
- Width from 100 mm up to 500 mm
- Moulds for polygonal laying
- Round arches with radius on request

SUGGESTION FOR A TENDER

___ rm drainage channel Pro

compact body with integrated drainage trims,

- | | | | | |
|--------------------|-------------------------------------|--|--------------------------------------|-------------------------------------|
| Raw Material: | <input type="checkbox"/> galvanised | <input type="checkbox"/> stainless steel | | |
| Grating: | <input type="checkbox"/> mesh grid | <input type="checkbox"/> perforated grid | <input type="checkbox"/> linear grid | <input type="checkbox"/> cross grid |
| Width: | <input type="checkbox"/> 100 mm | <input type="checkbox"/> 155 mm | <input type="checkbox"/> 200 mm | <input type="checkbox"/> 250 mm |
| Length: | <input type="checkbox"/> 1000 mm | <input type="checkbox"/> 1500 mm | <input type="checkbox"/> 2000 mm | |
| Adjustable height: | <input type="checkbox"/> 63 mm fix | <input type="checkbox"/> 73-103 mm | <input type="checkbox"/> 93-143 mm | <input type="checkbox"/> 113-183 mm |

can be cut to length on request, due to displaceable stands with clip-fixation,
stainless steel kick plate, stands easily to adjust from the topside,
to deliver and to install professionally

Gully Top Frame Pro

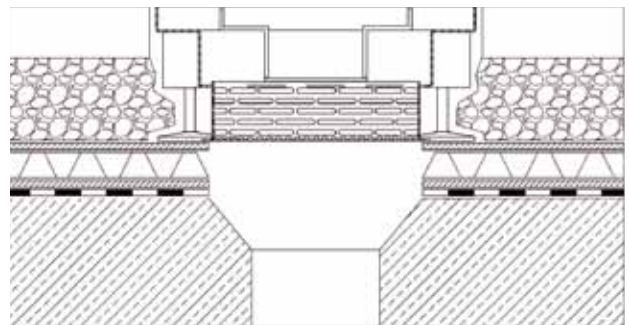


FEATURES

- Gully top frame with integrated water strainer
- Height easily to adjust from the topside
- 4 options to connect with our drains. The ports can be broken out easily on site.
- The gully top frame can also be used separately as well as system-independent.

DATA

- Body: Galvanised steel with super corrosion protector or stainless steel
- Dimension: 250 x 250 mm
400 x 400 mm
- Height Adjustment: 73 - 103 mm
93 - 143 mm
113 - 183 mm



DIMENSION ON REQUEST

- Dimension: 500 x 500 mm

SUGGESTION FOR A TENDER

___ pcs gully top frame Pro

- Dimension: ☐ 250x250 mm ☐ 400x400 mm
- Raw material ☐ galvanised steel with super-corrosion protection ☐ stainless steel
- Grating: ☐ mesh grid ☐ perforated grid ☐ flat course grating
- Adjustable height: ☐ 73-103 mm ☐ 93-143 mm ☐ 113-183 mm

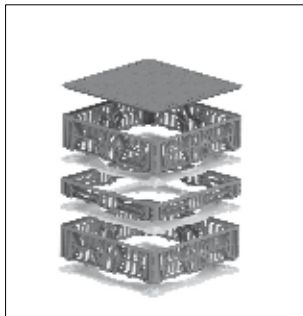
Connection with drains possible on 4 sides, incl. water strainer made of stainless steel, to deliver and to install professionally

Proof of delivery: 6 fuers Gruen GmbH - Kanalstrasse 2 - D-66130 Saarbruecken
Phone (+49) 06 81 / 9 60 21 46 - 0 - Fax (+49) 06 81 / 9 60 21 46 - 26
E-Mail info@6-f-g.de - www.6-f-g.de

Inspection Chamber and Gully Top Vario



Modular inspection chamber and gully top



Inspection chamber and gully top with extension elements 5 cm and 10 cm



Inspection chamber and gully top with pre-cut wholes Ø 50 mm for drainage pipes and Ø 80 mm for branch drains



Inspection chamber and gully top with grating

TECHNICAL DATA

Raw Material:	Recycling polypropylene, UV-resistant
Colour:	Anthracite
Top:	Lockable PP top cover or grating, galvanised steel, mesh size 30 mm x 10 mm
Floor opening:	Ø 310 mm
Loading Class:	A15
Dimension:	400 x 400 mm
Height:	60 mm or 100 mm
Extension:	10 mm, 50 mm, 100 mm

FEATURES

- Drains can be controlled and cleaned without bigger effort anytime
- Suitable for extensive and intensive green roofs as well as on roof terraces
- Modular design for flexible extension in steps of 1 cm, 5 cm and 10 cm
- High stability due to additional reinforcement elements every 10 cm
- Extremely space saving and easily to transport
- Reverse flanges allow for installation next to parapet and in corners
- Pre-cut whole facilitate connection of drainage pipes and branch drains
- Grating in size of paving slabs of 40 cm x 40 cm allows for use as gully top on terraces

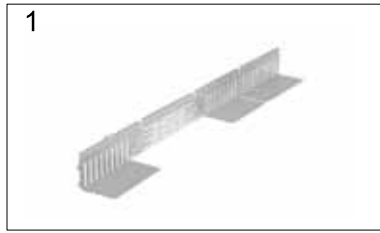
SUGGESTION FOR A TENDER

pcs inspection chamber and gully top Vario

modular chamber made of UV-resistant recycling polypropylene with stable top cover (loading class A15), extendable in 1 - 5 - 10 cm steps, with reverse flanges for installation next to parapet and corner areas, on each side pre-cut wholes for connection with drainage pipes and branch drains, also usable as discharger for downpipes, Ø 31 cm floor opening for all current gravity and pressure drainages

Raw material body:	<input type="checkbox"/> recycling polypropylene, UV-resistant
Top cover:	<input type="checkbox"/> lockable PP top cover <input type="checkbox"/> galvanised steel grid, mesh size 30 x 10 mm
Dimension:	<input type="checkbox"/> 400 x 400 mm
Height:	<input type="checkbox"/> 60 mm <input type="checkbox"/> 100 mm
Adjustable height in steps of:	<input type="checkbox"/> 10 mm <input type="checkbox"/> 50 mm <input type="checkbox"/> 100 mm

Inspection Chamber Pro – Foldable



Condition upon delivery



Folding of the inspection chamber



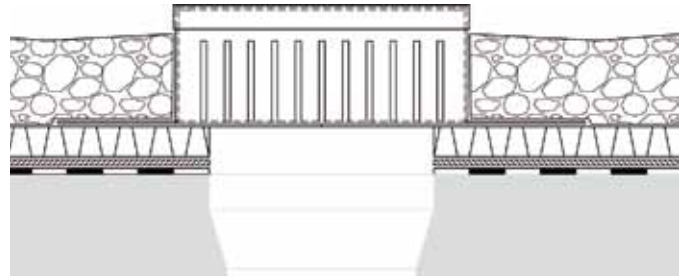
Inserting the joints
Corner joint
Inserting the straight plates into the retainers and bending them



Putting on the top cover



Also usable with extension chamber



Installation details of inspection chamber

DATA

- Body: : Aluminium, t = 1.50 mm with paint coating
- Top cover: Galvanised steel sheet with paint coating t = 1.50 mm
- Measurement: 250 mm x 250 mm
- Height: 100 mm
- Colour: RAL 9007 (grey aluminium)

FEATURES

- Drains can be controlled and cleaned without bigger effort anytime. For safe and steady drainage of green roofs
- Extremely space saving and easily to transport
- Robust construction made of aluminium and galvanised steel sheet
- Wide pressure distributing support-flange
- Also usable next to parapets
- With stable top cover

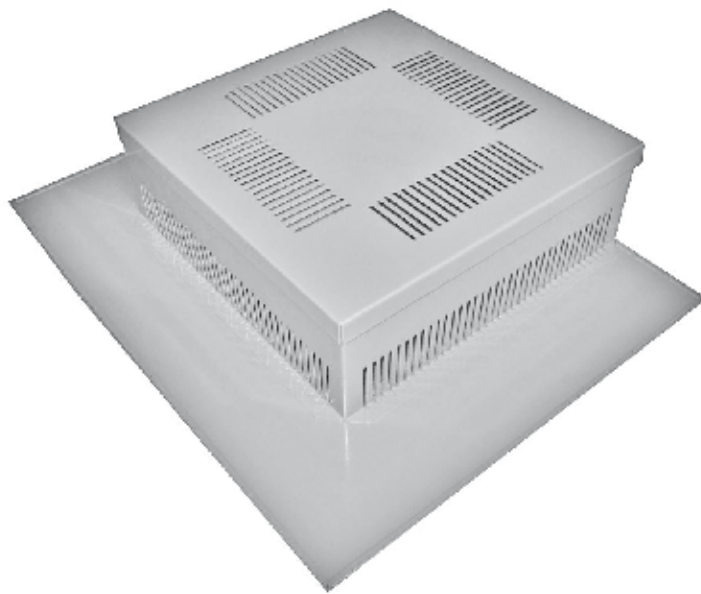
SUGGESTION FOR A TENDER

__ pcs inspection chamber Pro

foldable, colour coated RAL 9007, with wide pressure distributing support-flange and stable top cover

- Measurement: ☐ 250 mm x 250 mm
- Height: ☐ 100 mm
- Raw Material: ☐ Chamber made of aluminium (t = 1.50 mm)
- ☐ Top cover made of galvanised steel sheet (t = 1.50 mm)

Inspection Chamber Basic - Metal



FEATURES

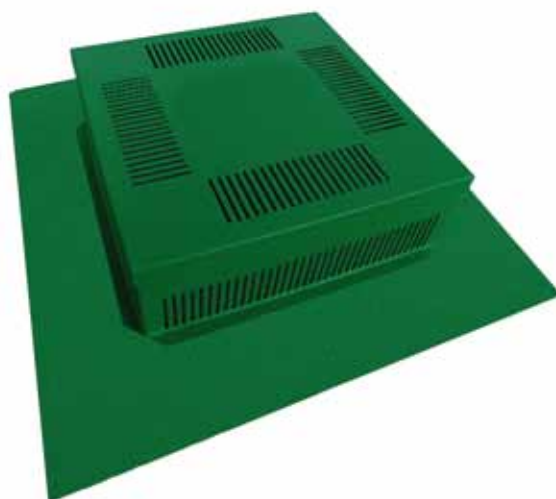
- Drains can be controlled and cleaned without bigger effort anytime. For safe and steady drainage of green roofs
- Can be positioned on the surface of the roof or next to a parapet of a membrane roof
- Body and top cover made of galvanised steel with triple paint coating (RAL 9007)
- With pressure distributing support-flange

ACCESSORIES

- Extension panel 125 mm high

DATA

Height:	100 mm
Dimension:	300 mm x 300 mm
Raw material body:	galvanised steel
Raw material top cover:	galvanised steel
Paint coating:	three times RAL 9007



SUGGESTION FOR A TENDER

__pcs inspection chamber Basic – metal

inspection chamber with body and top cover made of galvanised steel with triple paint coating (RAL 9007) with pressure distributing support-flange suitable positioning on the surface of the roof or next to a parapet of a membrane roof

Dimension:	<input type="checkbox"/> 300 mm x 300 mm
Height:	<input type="checkbox"/> 100 mm
Raw material:	<input type="checkbox"/> Body and top cover made of galvanised steel with triple paint coating
Colour:	<input type="checkbox"/> RAL 9007
Proof of delivery:	6 füers Gruen GmbH - Kanalstrasse 2 - D-66130 Saarbruecken Phone (+49) 06 81 / 9 60 21 46 - 0 - Fax (+49) 06 81 / 9 60 21 46 - 26 E-Mail info@6-f-g.de - www.6-f-g.de

Inspection Chamber Basic - Polypropylene



FEATURES

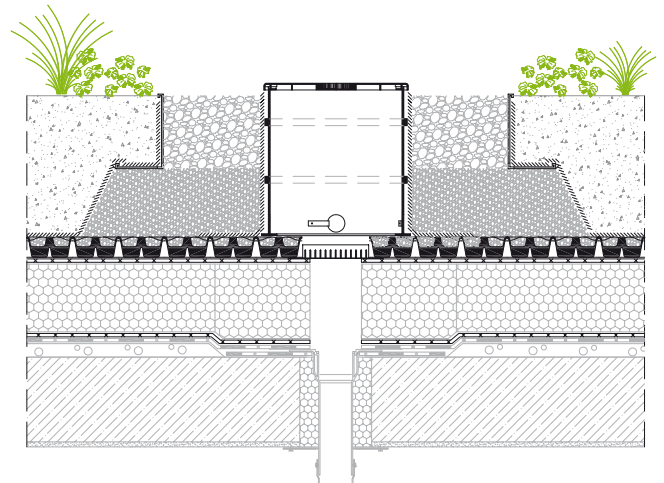
- Drains can be controlled and cleaned without bigger effort anytime. For safe and steady drainage of green roofs
- Big diameter makes it easier to clean the drains
- Lockable top cover with filter grid made of stainless steel for evacuation of surface flow
- With four pre-cut wholes for connecting drain pipes

ACCESSORIES

- Extension panel, 100 mm high

DATA

Height:	350 mm
Diameter:	400 mm
Diameter of filter grid:	120 mm
Raw material of body:	Polypropylene
Colour:	RAL 7032
Raw material of filter grid:	Stainless steel



SUGGESTION FOR A TENDER

__pcs inspection chamber Basic – polypropylene

inspection chamber made of quality polypropylene (RAL 7032) with pressure distributing support-flange, lockable and stable top cover with grid (Ø 120 mm) made of stainless steel or evacuation of surface flow and four pre-cut wholes (Ø 52 mm) for connecting drain pipes

Diameter:	<input type="checkbox"/> 400 mm
Height:	<input type="checkbox"/> 350 mm
Raw material:	<input type="checkbox"/> Body made of polypropylene, RAL 7032

Proof of delivery: 6 fuers Gruen GmbH - Kanalstrasse 2 - D-66130 Saarbruecken
Phone (+49) 06 81 / 9 60 21 46 - 0 - Fax (+49) 06 81 / 9 60 21 46 - 26
E-Mail info@6-f-g.de - www.6-f-g.de

6 fürs GRÜN

- Green Roofs
- Artificial Turf
- Natural Pon
- Garden Ligh
- Flat Roofin
- Road Con

Since more than 30 years
successful in green roofs



Print: 07/2023